

YEAR 7 WELCOME EVENING 2026

7th May 2026





Headteacher's Welcome

Mr Barber



Our vision:

Woodrush High School is a **welcoming** and **inclusive community**, building a sense of **belonging**; committed to providing an **aspirational** environment for learning and growth.

Our curriculum challenges, **inspires** and **empowers** all to **thrive** and exceptional teaching and support provides the foundation for all to achieve.



An aerial photograph of a school courtyard. A large, leafy green tree stands in the center. The courtyard is paved and surrounded by brick and glass buildings. Numerous students in school uniforms are walking around. The text "INSPIRE, ACHIEVE, CELEBRATE" is overlaid in large white letters.

**INSPIRE,
ACHIEVE,
CELEBRATE**

Year 7 Transition Team



Mrs Holtom-Brown – Deputy Headteacher

Miss L Osborne – Transition Co-ordinator

Mrs A Stafford – Special Educational Needs Co-ordinator

Ms J Onacko – Head of Year

Mrs K Desmond – Engagement Lead – Attendance

Mrs Crawley - Assistant Head of Year

The Transition Process



- Pupil data and student information
- Meetings with feeder schools
- Coffee mornings and parent meetings
- Assemblies in feeder schools
- Early transition days
- Transition taster days – Wednesday, July 1st 2026 (8.35am to 2.35pm)
- Transition Parent Evening – Wednesday, July 1st 2026 (5pm -6pm)
- Transition portal on school website
- Information packs and summer activities
- First days in September

Parent Communication

Please use **QR code** to download parent communication form if you require further assistance to support your child's transition to Woodrush

Woodrush High School - Year 7
Parent Welcome Evening



First day at Woodrush

- Year 7 students will start on **Friday, 4th September 2026**
- Main student gate will be open at 08.25am (8.45am on Wednesday).
- Year 7 pastoral team, Form tutors and SLT will meet students on arrival and direct students to line up in form groups on tennis courts.
- Year 7 students will take part in Woodrush Ready programme throughout their first day.
- Students will get their timetables and planners during this day.
- Students will also have their thumb scanned for ParentPay so they will be able to use school canteen from breaktime.
- Year 8 to 11 students will not arrive to school until Thursday, 4th September 2025.
- Year 7 students will have an early lunch from 1pm.

Positive Culture & Ethos

The **achievements** that our students accomplish are shaped through a culture of **high aspirations** driven by **exceptionally high standards** in all we do.

*Woodrush is a school where pupils live out leaders' expectations of being **Woodrush Ready: be prepared, be productive, be respectful, and be reflective.** This means the school is a harmonious community where difference is celebrated, and pupils behave considerately to each other and to visitors*

Ofsted April 2024



INSPIRE

ACHIEVE

CELEBRATE

Woodrush Ready



- **Be Prepared** - Attendance and punctuality, equipment, uniform, meeting deadlines.
- **Be Productive** - Using learning time effectively, high standards of work, love of learning.
- **Be Respectful** - Positive climate for learning, respectful and positive culture.
- **Be Reflective** - Always responsive to feedback and achieving excellence.

INSPIRE

ACHIEVE

CELEBRATE

Be Prepared



**WOODRUSH
Ready**

Be Prepared
Be Productive
Be Respectful
Be Reflective

EXCELLENCE
THROUGH ENDEAVOUR

The poster has a green header with a white hexagonal photo of students in a classroom. The text is in bold, black and green fonts. The bottom has a green footer with white text.

Attendance and punctuality

Equipment

Uniform

Being Safe

INSPIRE

ACHIEVE

CELEBRATE

Attendance Matters - Every day club



- We believe it is vitally important to attend school regularly and on time
- This gives the best opportunity for each student to progress and achieve their full potential

Year 11 predicted outcomes compared to attendance

Grades	Grade 9-5 English / Maths	Grade 9-4 English / Maths	Average grade	Positive Progress
Attendance above 96%	58%	81%	5	51%
Attendance 96%-90%	49%	73%	4+	48%
Attendance 90%-85%	24%	43%	3+	21%
Attendance below 85%	0%	0%	3	20%

INSPIRE

ACHIEVE

CELEBRATE

Attendance & Punctuality – Our Standards



- **We will always reward excellent attendance.**
- The government expects **Parents** to :
 - perform their legal duty by ensuring their children of compulsory school age, who are registered at school, attend regularly
- **At Woodrush High School we define ‘regular attendance’ to be at least 96%**
- We believe **family holidays should not be taken during term time.** We will not authorise requests for holidays and parents will receive a fixed penalty notice per parent per child
- **Our Inclusion team**, will work with families when attendance drops below unacceptable levels
- The **school must be informed on the first day and each subsequent day of absence** – failure to do so may result in a home visit from a member of school staff
- Persistent lateness can also lead to a penalty notice

INSPIRE

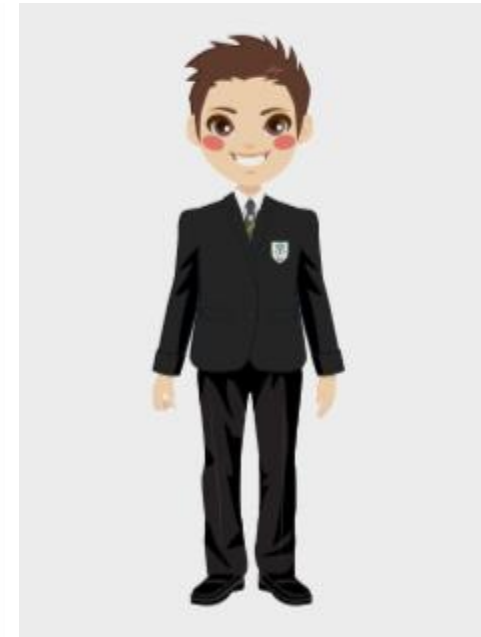
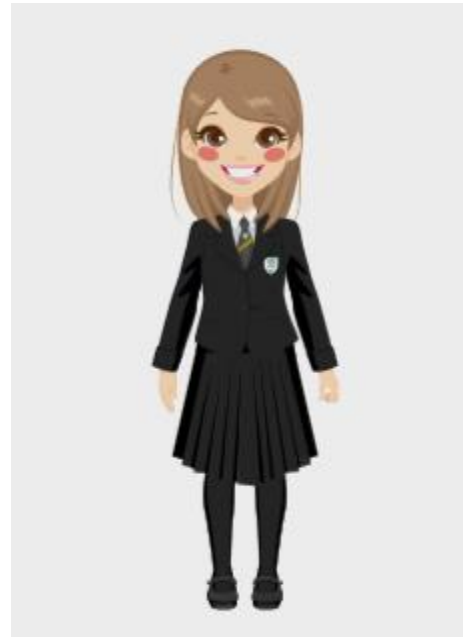
ACHIEVE

CELEBRATE

Uniform & Equipment



- The school has a uniform policy on school website that supports parents and carers finding affordable items to meet our expectations on uniform.
- This has meant the removal of some specific Woodrush Items from our uniform lists such as the Woodrush Skirt
- Over the past two years we also continue to encourage families to donate uniform items so we can have a uniform shop for those in need of specific items.
- We also continue to support families with individual items on a case-by-case basis.
- Families in receipt of FSM can receive support as needed by contacting Mrs. Cassidy at school (dcassidy@woodrush.org), where we can support the cost of some individual items.



INSPIRE

ACHIEVE

CELEBRATE

Be Productive



The poster has a green and white design. At the top left is a hexagonal photo of a classroom. To its right is the text 'WOODRUSH Ready' in white and green. Below this is a list of four 'Be' statements in bold black text. At the bottom left is the school motto 'EXCELLENCE THROUGH ENDEAVOUR' in white. A small version of the Woodrush logo is in the top right corner of the poster.

Secondary Curriculum

Homework

Using learning time effectively

INSPIRE

ACHIEVE

CELEBRATE •

Expectations in lessons are high



Habits of Success – Learner behaviours that become habits allowing learning to take place

S		Sit up straight and listen	
T		Track the teacher	
A		Ask and answer appropriately	
R		Respect those around you	
T		Take responsibility for your learning	

INSPIRE

ACHIEVE

CELEBRATE •

Woodrush Curriculum:

Excellence through Endeavour

We have a two-week timetable (A and B) and each lesson is 60 minutes long, with 5 lessons per day.

English

Maths

Science

History

Geography

PSHE

Faith and Ethics

Spanish (or Mandarin)

Computer Science

Design Technology

Physical Education

Art

Music

INSPIRE

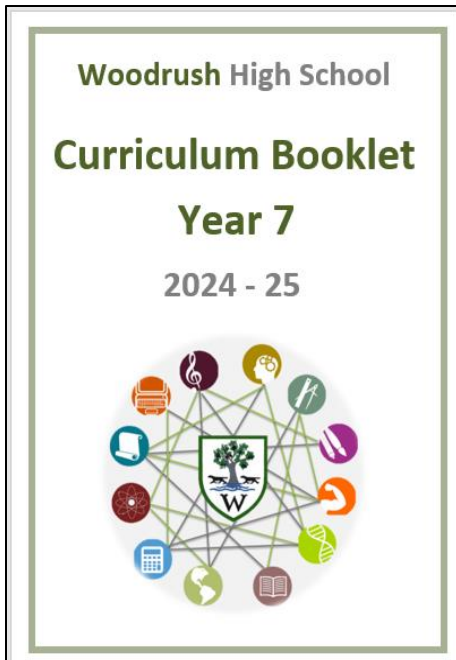
ACHIEVE


CELEBRATE

Woodrush Curriculum

At the start of each academic year, you will receive an electronic copy of our Curriculum booklet for that year.

This contains information on every subject your child will study that year; along with a detailed overview of topics, any prior knowledge your child should know, enrichment opportunities (such as clubs and trips) and ways in which you can help and support your child at home.



		Autumn 1	Autumn 2	Spring 1	Spring 2	Summer 1	Summer 2
		 Woodrush High School <small>An Academy for Students Aged 11-18</small>					
		Year 7 Curriculum Overview					
		Art					
		<i>“The Art and Design curriculum is designed to provide pupils with the opportunity to demonstrate imagination and creative flair, together with problem solving, whilst learning the skills and techniques to effectively use a wide range of media.”</i>					
Topics		EDIBLES Baseline assessment Drawing skills Mushroom observations Pepper study	EDIBLES Colour wheel Tints, tones and shades Orange study Venus Winston	ILLUSTRATION Charlie Mackesey Lauren Childs Illustrator linked with English	ILLUSTRATION Stop Motion Animation using soundtrack created in Music. MINIBEASTS Mindmap Photography	MINIBEASTS Mixed media workshops Biro and hairspray Chalk and charcoal Press printing Textured press printing	MINIBEASTS Jean Cody book paper butterfly Paper collage bug Clay beetles
Assessments		Baseline assessment – sustained drawing task	Book work – colour theory assessment	Illustration outcomes – Assessment Objectives	Animation Outcome – Assessment	Book work Assessment - Assessment Objective 2	Overall grade based on book work and outcomes.

INSPIRE

ACHIEVE

CELEBRATE

Homework

Helping you to Learn More, Do More & Remember More

- Homework is an important part of our curriculum.
- Homework will primarily be online self-marked quizzes, linked to the key knowledge they are learning in the classroom.
- We have a staggered start in Year 7, where only Maths and English homework will be set from September up to October half term.
- Maths and English homework is 45 minutes each week.
- All other subjects set fortnightly, 30 minutes.



INSPIRE

ACHIEVE

CELEBRATE •

Opportunities beyond the classroom



We have a huge variety of extra-curricular clubs and other opportunities. We actively encourage all students to attend as many clubs and trips as possible:

- **Extra-curricular Clubs** - chess club, club, drama club, art club, science club, STEM club, cookery club, variety of different sports clubs and teams
- **Student leadership** -School Council Representative, Prefect, Literacy Leader, Diversity Ambassadors, Language Ambassador, Anti-Bullying Ambassadors



INSPIRE

ACHIEVE

CELEBRATE

Be Respectful



**WOODRUSH
Ready**

Be Prepared
Be Productive
Be Respectful
Be Reflective

EXCELLENCE
THROUGH ENDEAVOUR

The poster has a green top section with a white hexagonal photo of a classroom. The text 'WOODRUSH Ready' is in white and green. The bottom section is white with green borders and contains the four 'Be' statements and the school motto.

Respectful and positive culture
Rewards & Achievement

INSPIRE

ACHIEVE

CELEBRATE



Rewards and Achievement

Positive relationships are key to the success of the school. This is cultivated by positive praise and by a clear vision that excellence can be achieved through endeavour.

Achievement and Rewards

Our reward system ensures that we celebrate all students' achievements through:

- Achievement and character points
- Certificates
- Blazer flashes
- Faculty shout outs
- Outstanding student
- Celebration assemblies
- Top Achievers rewards
- A2L and progress rewards
- Postcards home
- Headteachers letters
- Awards Mornings

WOODRUSH Ready

Incident	Examples of Achievement	Achievement Points
A1	Good Attendance, piece of work, equipment, assessment, politeness, courtesy	1
A2	Excellent Attendance, punctuality, fully equipped regularly, progress in lessons, supporting school/sporting events	2
A3	Excellent Attendance across a 1/2 term, attainment in assessments, volunteer work in the community	3
A4	100% attendance, outstanding progress, significant contribution to wider school life, leading & taking part in a school focus group	4
A5	Exemplary attitude to school life, blazer flashes, leading student groups, significant contribution to supporting others in school	5

EXCELLENCE THROUGH ENDEAVOUR

INSPIRE

ACHIEVE

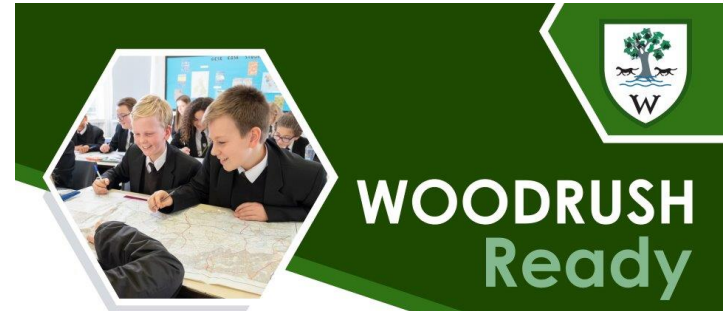
CELEBRATE

Same Day Resolutions

Positive relationships are key to the success of the school.

Woodrush is a place for learning and every student, every lesson and every day, has a right to learn with minimal distraction in a positive environment committed to excellence.

Same day resolutions will allow time for restorative conversations to take place and to reflect, restore and re-engage positive relationships between staff and students.



WOODRUSH Ready

Incident	Examples of Incident	Behaviour Points
C0	Verbal warning given	0
C1	Student not correcting behaviour after warning / punctuality	1
C2	Repeated poor behaviour or disrupting learning	2
C3	Refusal to follow request / Call Out / Failure to attend resolution	3
C4	Inappropriate behaviour to peer or adult / None compliance with SLT	4
C5	Serious Breach of School Code of Conduct	5

EXCELLENCE THROUGH ENDEAVOUR

INSPIRE

ACHIEVE

CELEBRATE



Parental Engagement

- The communication between teachers and parents is paramount to us at Woodrush.
- Staff will take the time to ensure they contact you to discuss any concerns regarding your child.
- Please ensure you take your time when reading through the **home school agreement**.
- If there is anything you are not clear on or disagree with please do get in contact before signing the agreement.
- We do expect all parents to fully support the school on any decisions made regarding our behaviour policy and we thank you in advance for this.

INSPIRE

ACHIEVE

CELEBRATE

Use of Mobile Phones



We are a mobile free school

- **We have a no mobile phone policy** – if it is seen out after entering the school site (for any reason) it will be confiscated, and parent will have to collect it at the end of the day before 4.30pm. A sanction will also be issued.
- **We expect Parents/Carers to agree and support this policy.**
- **Set parental controls on your child's phone**
- We have a zero tolerance on online or cyber bullying, sharing of photos/videos or posts with the intent of degrading others
- **Children are taught the dangers and appropriate use of technology** through assemblies, external visitors such as the police, our PSHE Curriculum and Form Time activities
- **We also will not expect any student or parent/carer to go on social media to express their discontent of other children, parents, staff or the school – speak to us first**

INSPIRE

ACHIEVE

CELEBRATE



Special Educational Needs & Disabilities

INSPIRE

ACHIEVE

CELEBRATE

SEND Department



- A team of staff led by SENCo Mrs Stafford. The department also includes
 - **SEND Student Support and Family Liaison, and Autism mentors - Mrs Gittins & Mrs McCarthy**
 - **Learning Support Assistants/Disability Support Assistants**
 - **Student Literacy and Numeracy Intervention coordinator**
 - **Student Counsellor**
 - **Emotional Literacy Support Assistants and intervention programmes**
 - Collaborative working with outside agencies including the Learning Support Team, Educational Psychology, local authorities and medical professionals.
- We have liaised with primary schools and outside agencies for information about the new year group
- We will develop a One Page Learning Profile for children with additional needs and advise teaching staff on learning strategies that are advised to work well for your child. This is in consultation with the child and parent(s)/carer(s) too.
- Contact – sen@woodrush.org for further details or transition support

INSPIRE

ACHIEVE

CELEBRATE



Pupil Premium Funding

INSPIRE

ACHIEVE

CELEBRATE

Pupil Premium Funding



What is the Pupil Premium?

- The Pupil Premium is government money designed to help disadvantaged children and young people do well at school. The funding is allocated to schools for children from Reception to Year 11 who have registered for free school meals in the last six years, are in care or have parents in the Armed Forces.

I am not sure if my child could have free school meals – how do I find out?

- Woodrush School Website - [Online FSM Application \(cloudforedu.org.uk\)](https://cloudforedu.org.uk) applying for Free School Meals

Where can I get more information?

- For information about how we plan provision and track progress please see the school website or contact myself at dmonk@woodrush.org

INSPIRE

ACHIEVE

CELEBRATE



Reading at Woodrush

INSPIRE

ACHIEVE

CELEBRATE

Monitoring your Child's Reading

Reading Interventions and Homework



Lexonik Reading Interventions

Lexonik Leap

- **Phonics Programme.** Lexonik Leap is designed for students who find basic literacy challenging, especially older learners at secondary school.
- The programme **addresses phonics gaps** with age-appropriate resources, ensuring students of all ages can build foundational literacy skills quickly and confidently.
- **1 hour session - 3 times a week**

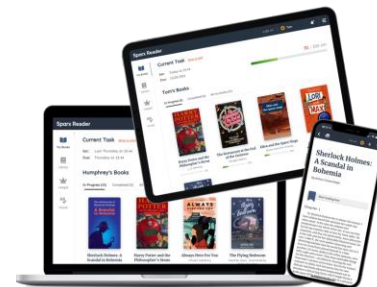
Lexonik Advanced

- Supports students in **breaking down complex words for better reading accuracy.**
- **6-Week Programme.** One-hour sessions once a week, delivered over six weeks



Sparx Reader

- **Sparx Reader is an online eBook store and reading monitoring system we use at Woodrush.**
- After an initial **diagnostic reading test**, students are offered fantastic books at their reading level from a wide range of texts.
- **Homework tasks** are also personalised, so all students can experience regular success in reading. Students complete **40 minutes of careful reading each week**
- As they read, **students answer regular questions**, helping them to stay engaged in the story. It also encourages students to be **careful readers**. Readers earn Sparx Reader Points (SRP) and can compete with others to climb the league table.



INSPIRE

ACHIEVE

CELEBRATE

An aerial photograph of a school courtyard. In the center is a large, leafy green tree. To the left is a long building with a green-tinted glass facade. To the right is a brick building with large windows. The courtyard is paved and contains many students in school uniforms walking or standing in groups. The text 'INSPIRE, ACHIEVE, CELEBRATE' is overlaid in large white letters across the center of the image.

**INSPIRE,
ACHIEVE,
CELEBRATE**

Excellence through Endeavour

Parent Communication

Please use **QR code** to download parent communication form if you require further assistance to support your child's transition to Woodrush

Woodrush High School - Year 7
Parent Welcome Evening

