

# WOODRUSH HIGH SCHOOL



## PROSPECTUS

EMPOWER

ENRICH

ACHIEVE

# Welcome to Woodrush Sixth



We are delighted that you are considering Woodrush Sixth for your post-16 journey.

Woodrush Sixth is proud to be more than just an education provider: it is a thriving place of learning and development at the heart of our local community. It is the final chapter of educational excellence at Woodrush High School – fostered through passionate teaching, ambitious study, enriching experiences and a unique sense of cooperative learning.



Decisions you make between 16 and 19 are some of the most important and exciting decisions you will make as a young person and Woodrush Sixth can provide you with unique opportunities that distinguish you from others. No two students are treated the same at Woodrush Sixth as personalisation is central to our approach: from our intimate tutor support and pastoral support to our bespoke timetables, careers advice and personal development enrichment programme.

Woodrush Sixth is about a passion for learning, the pursuit of teaching excellence, motivating academic support and a relentless commitment to maintaining the highest belief in your ability to achieve outstanding results.

Woodrush teachers will ensure high-quality, interactive lessons and seminars and design illuminating curriculum and extra-curricular experiences. All of which will blend high challenge with the forging of life skills. developing character and personal resilience and will prepare you for your next steps into your future.

Students who join Woodrush Sixth are treated as mature members of our community, with freedoms and privileges that young adults have more than earned. Relationships shift to a learning partnership with your tutors, specialist teachers, and vitally, your fellow students.

We orientate our offer on your becoming: becoming leaders; young ambassadors; active citizens and within our community - with opportunities to build up your CV and personal statement with experiences that set you apart from the crowd.

The transition from Year 11 to young adulthood is a significant one, so nurturing and supporting your holistic wellness and wellbeing is an explicit dimension of life at Woodrush Sixth and you will have access to our strong team of specialists from day one.

Woodrush Sixth works around you and we can offer you a uniquely personalised post-16 experience that enables you to fulfil your academic ambitions, raise your personal aspirations and assist you in forging your own future beyond Woodrush Sixth.

I hope the information contained within this prospectus, enables you to see how you could **make Woodrush Sixth work for you.**

Mr Barber, Headteacher

# Vision & Values

We have a clear aim at **Woodrush Sixth**:

***“To EMPOWER, to ENRICH, and to ACHIEVE”***

These three principles underpin everything we do as a sixth form.

We will **EMPOWER** you as an individual so you can experience incredible personal growth and sustained academic development, from a 16 year old that has just completed their GCSE's into a young adult that is prepared for University, an apprenticeship or employment.



We will **ENRICH** the curriculum so that you learn more than just the knowledge and skills outlined in your courses. We want you to leave Woodrush Sixth with memorable learning experiences both inside and beyond the classroom that you will remember years after you have left us. We want you to leave us enriched with the knowledge, skills and experiences that will prepare you to follow your dreams and to make positive changes to our society in the future.



We will support you to **ACHIEVE** and maximise your potential. We will never place a limit on what you can achieve and we will be relentless in making sure that you perform to your optimal personal best, so that you gain the qualifications, confidence and develop personal aspirations you need to carve a future for yourself.



*‘The curriculum offer for post-16 is now broad and of high quality, with a significant number of enrichment opportunities.’*

*Ofsted, 2024*



# We EMPOWER

We have a dedicated sixth form team of staff who provide pastoral support to empower each student in their post-16 studies.

- SLT Assistant Headteacher – Mr Roche
- Head of Woodrush Sixth – Mrs Kaur
- CEIAG Co-ordinator – Mr Cooper
- Pastoral Support Leaders – Ms Ashman and Mrs Robinson



These staff are all based in our Post-16 block and provide the support and nurture that students need and to challenge students to be their best selves. We pride ourselves on the care that we provide and the team work tirelessly to help students emotionally, mentally and academically. Their aim is to empower students so that they become independent and resilient learners who are ready for University, apprenticeships or employment.

## Student views at Woodrush Sixth:

*"At Woodrush Sixth, our teachers are not just educators, they are mentors who provide brilliant pastoral support. I feel that staff are committed to ensuring that I reach and exceed my academic potential. I want to go on to do a degree apprenticeship and I feel fully supported by Woodrush Sixth to go on and do that"*

**G. Waterhouse - Head Student**

*At Woodrush Sixth form, I feel respected and supported as a young adult. I have always wanted to be in the medical field since I was younger, so to get to that point I have decided to take 4 A-Levels, which can feel overwhelming at times. Here at Woodrush I am supported and listened to, and the staff make sure everyone in Woodrush Sixth feels comfortable. For instance, we are provided with independent study sessions, group study session to support and influence our revision. To add, being part of the student committee allows me to voice my peers and my own opinions to ensure the sixth form space remains beneficial to our wellbeing, our academic studies and allow us to become more independent.*

**D. Hateley-Smith – Woodrush Sixth Student Councillor**

*"At Woodrush Sixth, the way of life is very different to the rest of the school. You are treated much more like an adult and you are allowed much more freedom. We are allowed to timetable our own independent and group study periods and this allows you to complete most of your work withing school hours"*

**O. Hemming – Woodrush Sixth Student**

"Having come from another school, Woodrush Sixth has been an amazing place to become a part of. Support from teachers has been brilliant from the moment I started and the sixth form community has become a new family for me. The teachers here are always eager to make adaptations to my needs to allow me to progress as well as possible and I've already built a strong support network with them. There's a constant strive for improvement and progression with regular communication between staff and students which is making the sixth form better every day. The atmosphere here is one in which I can grow and make progress while not being overworked. The balance with work and wellbeing really makes the task of A-levels more bearable and has allowed me to make friends and have fun alongside my studies. It's a place that makes me grow and improve every day and is a pleasure to be a part of."

**A. Venters – Woodrush Sixth Head Student**

"Woodrush Sixth form has given me opportunities I never thought I'd have, such as the chance to visit Auschwitz through the lessons from Auschwitz programme or go to New York which was a bucket list opportunity. These trips meant I spoke to people I never thought I would and made surprising friendships. It also gave me extra independence when given opportunities to explore New York by staff and this gave me a new found confidence. Also the life lessons you learn as part of sixth form such as taking responsibility for your work load and skills such as time management and organisation which are crucial for later life."

**E. Cooksey – Woodrush Sixth Head Student**

"At Woodrush Sixth, the quality of teaching and lessons is truly outstanding. My teachers are all very supportive and extremely helpful with helping me towards my dream of studying Physics at University. Excellent opportunities have been provided to me such as being able to volunteer in Maths and Physics classes to give me more experience in the field I want to pursue. In all of my A-levels the lessons are designed to be engaging and informative and the teachers ensure that we understand what we are learning about. The teachers also provide resources and advice to help me and my classmates feel confident and perform our best academically all of which makes me feel lucky to be a member of this excellent sixth form."

**I. Hemmings – Woodrush Sixth Head Student**

"I appreciate the support from the staff, they encourage learning through different ways that allows for successful results. The student societies programme is a wonderful idea that helps us relax whilst leading our own enrichment session. The drama enrichment has also let me contribute to the school production in a creative way outside of my formal learning."

**D. Ahmed – Woodrush Sixth Student**

# Facilities

In addition to the shared facilities around the school, the Sixth Form Centre is a space reserved for use by post-16 students at Woodrush Sixth. It creates a purposeful learning environment and acts a hub for developing a positive and enthusiastic culture in the sixth form.

Our facilities include:

- Dedicated ICT rooms used only for sixth form study
- Independent study room for students to study by themselves in a calm and focused environment
- Group study / common room which is used for students to work together, which helps create a vibrant learning ethos. At break, lunch and after school it acts as a common room in which sixth for students can relax, socialise and build relationships with their peers and staff members.
- Wellbeing resources including games to encourage students to relax and socialise in their wellbeing periods
- Public Library / Woodrush School Library in the Community Hub. This is a modern study space which can be used by our students so they can access the widest possible range of resources.
- Gym located in the Community Hub with reduced rate memberships.
- Conference room used as a study space and for Sixth Form Council meetings.

We are proud to work in partnership with the Community Hub, Worcestershire Library, and the Woodrush Training Consortium to create additional opportunities for our students such as work experience, volunteering, charity work and part time employment.





# Careers Education, Information, Advice & Guidance (CEIAG)

Mr Cooper is our CEIAG co-ordinator and he has a wealth of experience in mentoring students through their transition from A-Level students to university, apprenticeships or employment. His passion is evident in the time spent giving personalised support to empower students so they can realise their ambitions.

*'The school has well-developed links to a wide variety of post-16 and post-18 destinations.' Ofsted, 2024*

This includes:

- Training and support in completing UCAS forms, and apprenticeship applications
- Delivering the Career Ready programme where students gain mentors from business and complete paid internships
- Mentoring students on writing powerful personal statements
- Trips to Higher Education conferences
- Visits to Universities to raise aspirations and broaden horizons
- Guiding students to make ambitious and informed choices about their chosen courses, universities and apprenticeships
- Information about structured gap years / volunteering
- Supporting students who may need to go through clearing following results
- Bespoke support to students who are applying to Oxbridge or are applying for courses such as Medicine.

*'Pupils in Year 12 have work experience placements, and the school ensures that pupils who are disadvantaged have appropriate support to achieve this.' Ofsted, 2024*

## Student Leadership



To further empower our students, we have an active student council, this consists of Head Students and a team of student councillors who represent the diverse views in the sixth form. The student council meet fortnightly to discuss ways to improve the sixth form experience and to plan charity events such as our Macmillan Coffee Morning in which the sixth form raised £600 this year. They also help plan and organise social events and reward trips, which have previously involved attending the theatre, going out for meals and attending Winter Wonderland in London. Senior prefects also lead on lower school forums on wellbeing, inclusion, anti-bullying and sports.

At Woodrush we believe students should be given a voice and the sixth form council feedback to the post 16 team and we always listen and respond to their voice.

We regularly survey student opinion to ensure that all students have an opportunity to further develop the positive culture we have in Sixth Form.

# We ENRICH



The Woodrush Sixth curriculum offer is designed to be broad, balanced and enriching. Our curriculum is designed to empower students to become independent learners, to enrich their knowledge and skills and enable them to achieve so they can progress onto one of these future pathways:

- University
- Apprenticeship
- Employment

When a student joins Woodrush they will choose 3 A-Levels or 2 A-Levels + 1 AAQ (Alternative Advanced Qualifications). In a small number of cases, students may choose 4 A-Levels and reduce this to 3 A-Levels in year 13. A student can only choose a maximum of 1 AAQ due to qualification regulations.

## **What subjects can I choose and how do I choose them?**

Provisional option blocks for the academic year 2025-26 are available from the Woodrush Sixth team. There are typically 5 blocks of subjects and you can choose 1 subject from each option block, and will also be enrolled in our enrichment programme and either the Extended Project Qualification or extra-credit modules.

These are provisional option blocks and may be subject to change based on uptake.

Students who fail to achieve grade 4 in English or Maths must resit and have timetabled lessons to support their resit. Due to the demands this places upon a student's study time, we can't accept students who need to resit both GCSE English and GCSE Maths.

## **Mandarin**

huān yíng

欢迎

**Welcome**

We are excited to offer the highly regarded HSK Level 4 qualification for those students who have studied Mandarin GCSE which can be taken as an extra qualification in addition to their 3 A-Level choices. This is offered in a very small and select number of schools and the HSK Level 4 develops students' proficiency in Mandarin so that they are able to read to communicate fluently and confidently. We are proud to offer this as an enriching experience and as a qualification which few students in the U.K. get to study.



# Entry Requirements

Woodrush Sixth is an inclusive sixth form and our entry requirements are designed to be as broad as possible whilst ensuring students have the right level of prior attainment to be successful on their chosen courses.

Subject	Entry Requirements
<b>A-Level Maths</b>	Grade 7 in Maths and Grade 66 in Combined Science or a 6's in Chemistry and Physics (separate science)
<b>A-Level Biology</b>	Grade 66 in Combined Science or Grade 6 in Biology (separate science) and Grade 6 in Maths
<b>A-Level Chemistry</b>	Grade 66 in Combined Science or Grade 6 in Chemistry (separate science) and Grade 6 in Maths
<b>A-Level Physics</b>	Grade 66 in Combined Science or Grade 6 in Physics (separate science) and Grade 6 in Maths.
<b>A-Level English Literature</b>	Grade 6 in English Literature and English Language
<b>A-Level English Language</b>	Grade 6 in English Literature or English Language
<b>A-Level Film</b>	Grade 5 in English Literature and English Language
<b>A-Level Geography</b>	Grade 6 in Geography and Grade 5 in English Language
<b>A-level History</b>	Grade 6 in History and Grade 5 in English Literature and Language
<b>A-Level Sociology</b>	Grade 5 in English Literature and English Language
<b>A-Level Criminology</b>	Grade 5 in English Literature and English Language
<b>A-Level Psychology</b>	Grade 5 in English Language and Grade 5 in Maths
<b>A-Level Art</b>	Grade 5 in Art
<b>A-Level Business</b>	Grade 5 in Business or Grade 5 in English Literature and English Language
<b>A-Level Product Design</b>	Grade 5 in Product Design
<b>A-Level P.E.</b>	Grade 5 in PE or Merit in BTEC Sport
<b>AAQ Health and Social Care</b>	Grade 55 in Combined Science, Grade 5 in Biology (separate science) or a Merit in BTEC Health and Social Care
<b>AAQ Human Biology</b>	Grade 55 in Combined Science

These are provisional subjects on offer and this may change slightly.

Where a student just misses entry requirements for a course, we will review on a case by case basis and take into account performance in other subjects and teacher's professional judgements.

# Woodrush Sixth Teaching & Learning

We pride ourselves of the strength of our teaching and strong student-teacher relationships.

Our last full Ofsted inspection recognised how:

- *'The quality of teaching is strong and in many subjects it is outstanding.'*
- *'Teachers have excellent subject knowledge and share their enthusiasm for their subjects with students who are keen learners.'*
- *'Teachers routinely plan lessons which engage and motivate students and relationships are excellent.'*



At Woodrush Sixth we ensure that every lesson is focused, purposeful and actively engaging. Lessons are delivered by subject specialists who are constantly engaging in the latest educational research, pedagogy and subject knowledge to enrich our students' learning.



As a school we utilise the most impactful educational research and actively use strategies from the Education Endowment Foundation to ensure our students make good progress in lessons.

- 1 Begin a lesson with a short review of previous learning.
- 2 Present new material in small steps with student practice after each step.
- 3 Ask a large number of questions and check the responses of all students.
- 4 Provide models.
- 5 Guide student practice.

As a training consortium school, Woodrush Sixth teachers benefit from nationally recognised teaching, leadership and behaviour qualifications. And we are funded by the Department for Education to deliver an exciting programme specialising in effective feedback. This means you know that the teaching practice at Woodrush Sixth is informed by the latest educational evidence which means better teaching to drive their learning forwards.

- 6 Check for student understanding.
- 7 Obtain a high success rate.
- 8 Provide scaffolds for difficult tasks.
- 9 Require and monitor independent practice.
- 10 Engage students in weekly and monthly review.

Woodrush Sixth Teachers are encouraged to structure their teaching using our 10 whole school principles of instruction but to also inspire curiosity, creativity and exploratory discussions, so that students are actively engaged and motivated to learn.

Lessons at Woodrush Sixth are fast paced, dynamic and are led by passionate and dedicated subject specialist teachers.

Our aim is to enrich our learners and that begins in the classroom and utilises Microsoft Teams to deliver an integrated online curriculum so students can always access lesson resources to aid their independent study.

# Curriculum & extra-curricular experiences

Trips are a core component of the curriculum and we aim to offer a curriculum visit for every A-Level course that we offer. This is important to enrich students experience at post-16 and to show how learning is not confined to the classroom. Visits are designed to deepen knowledge, embed skills and to inspire students to learn more and to aim higher.

Some examples of curriculum visits are listed below:

- University experience days
- UCAS conventions
- Theatre trips
- Geography field work trips to Dorset
- Business experience at Worcester University
- Biology trip to Kew Gardens
- Art trip to Tate Modern



We also believe in reward trips to celebrate the success of our students at Woodrush Sixth and extra-curricular trips to expose students to memorable and inspiring experiences.

Examples of these trips are listed below;

- International trips (run every 2 years)
- Go karting / laser tag reward trip
- Christmas / Festive trips
- Theatre trips
- House of Parliament Trip





# Enrichment programme

The word enrich means to make wealthy and we have an enrichment programme and ethos that will make students wealthy in the knowledge and experiences they will gain. In addition to enriching the A-Level curricula that students follow, all students will experience a varied enrichment programme which is delivered in form time and on Wednesday afternoons. Study at post-16 is not just about studying for exams, it is about immersing students to differing viewpoints and giving opportunities to learn something new.

## 1. Form Time Enrichment

Each day Sixth formers will be in mixed year 12 and year 13 forms so they can build relationships with students in another year. Time is used productively to enrich students and set themselves up for a day of learning, and to make them think about issues in the world around them.

- *Monday* – Weekly notices, character education and self-directed study
- *Tuesday* – Assemblies with a theme for each week
- *Wednesday* – Current affairs discussions
- *Thursday* – PSHE. We follow the “My Journey of Life” scheme of work
- *Friday* – Quizzes / Competitions / Teambuilding

## 2. Wednesday Afternoon Enrichment / Volunteering

Every Wednesday afternoon the sixth form comes together as a whole for enrichment, and all students volunteer inside or outside of school. This helps build the strong ethos and culture at Woodrush Sixth.

- **CEIAG:** bespoke careers education, information, advice and guidance and includes support on university / apprenticeship applications and the career ready scheme
- **EPQ:** students can complete the AQA extended project qualification
- **Open University Open Learn:** students study modules of their own choice on the Open Learn website to enrich their learning beyond the curriculum
- **Mandarin HSK level 4:** this is for students who studies GCSE Mandarin and want a further qualification in Mandarin
- **Volunteering:** ALL students do at least 2 hours of volunteering in / outside of school
- **Enrichment rotations:** Students get to take part in rotations on the following topics
  - **Sports:** students take part in sports to support their wellbeing
  - **Technology / Food Technology:** students develop creative and life skills
  - **Entrepreneurial** project: students learn develop their own business ideas
  - **Drama:** students develop their oracy and communication skills
  - **Student societies:** student lead their own enrichment based on their interests
  - **Masterclasses:** students are exposed to sessions from experts in their field

# You ACHIEVE



Through empowering and enriching our learners we want every learner to realise their potential and to achieve fantastic A-Level results so they can attend University, begin an apprenticeship or enter into employment. We treat each student as the individual that they are and celebrate personal growth, development and success. Typically, 75% of our Sixth Formers go on to University, with many and around 25% of our students go onto higher level apprenticeships or employment. We have a proud history of success at Woodrush Sixth and this is built around a culture of achievement and high expectations.

## Student expectations

This prospectus outlines what you can expect from Woodrush, and we expect a lot from our sixth form students so that they buy into our vision.

### We expect:

- Outstanding attendance – at least 97%
- Punctuality to school and lessons
- Sixth formers to be role models for students in lower years
- Resilience, independence and determination
- Politeness and positivity
- Ambition for students to be their best selves



These expectations are the foundation upon which we build, grow and achieve and we are relentless in upholding these expectations, so that students can realise their dreams.

## Self-directed study time

We expect that for every timetabled lesson a student should do at least 1 hour of study outside of lessons as a minimum to enable them to reach their target grade. To develop independence, we allow students to self direct and schedule their own independent study, group study and wellbeing periods. All students in year 12 have the following sessions, which cover the full 40 periods over a 2 week timetable.

- **Core curriculum:** most students study 3 subjects each of which has 7 lessons (each of 75minutes) a fortnight. A small number of students choose to study 4 subjects.
- **Enrichment:** 3 lessons a fortnight on Wednesday afternoons each week.
- **Independent study:** students timetable 6 periods of independent study a fortnight
- **Group study:** students timetable 6 periods of group study a fortnight
- **Volunteering:** students arrange and timetable 2 periods of volunteering a fortnight
- **Group study:** students timetable 2 wellbeing periods a fortnight

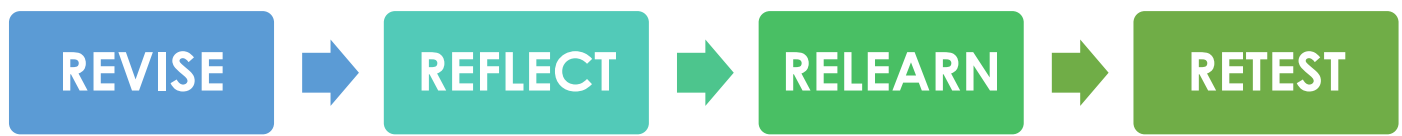
## Assessment

All students are given personalised target grades for each subject that they study. These targets are based upon national statistics and a student's average points score in their GCSE's.

These targets are ambitious, challenging yet achievable for each learner and we always push to ensure that your child meets and exceeds these targets, and we never limit ambition and encourage them to always aim higher.

Through empowering you to be a determined, resilient and independent learner, and through enriching the curriculum we aim for the highest levels of achievement and want you to be the best student you can be.

Assessment is used to measure progress and we believe in frequent formative and summative assessment with targeted and personalised feedback used to drive your learning forwards. We believe that to be successful, post 16 students must follow what we call the 4R's:

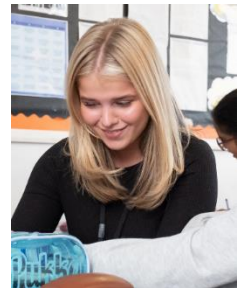


### REVISE

We teach students how to revise and expect revision is evidenced before an assessment

### REFLECT

We help students reflect upon their progress following assessments and they identify strengths and areas for development



### RELEARN

Where learning gaps have occurred our staff will support in reteaching and students will relearn so that these gaps are closed



### RETEST

When a student performs below target we expect students to retake and retest themselves on parts of over a whole new test.

This learning cycle means that students are prepared to achieve and we will always support and guide them when they do not meet their target grade. Our ultimate goal is for students to make outstanding progress and to realise their potential.





# Destinations

**Woodrush Sixth** is a pathway to University, Apprenticeships or Employment. The table below shows the Universities and Courses that our students have enrolled onto following their success in our sixth form.

University	Degree Course
Aberystwyth University	Biochemistry
Aston University, Birmingham	Biological Sciences
Aston University, Birmingham	Electrical and Electronic Engineering
BIMM University	Filmmaking
Birmingham City University	Fine Art
Birmingham City University	Primary Education with QTS
Birmingham City University	Sport and Exercise Science
Birmingham City University	Real Estate with Foundation Year
Bristol, University of the West of England	Drama and Acting
City, University of London	Optometry
Keele University	Criminology and Sociology
Newman University, Birmingham	Primary Education (3-11) with QTS
Newman University, Birmingham	Primary Education (3-11) with QTS
Newman University, Birmingham	Studies in Primary Education
Nottingham Trent University	Biomedical Sciences
Nottingham Trent University	History
Nottingham Trent University	Sport and Exercise Science
Royal Holloway, University of London	English and Film Studies
University of Birmingham	Biochemistry with Study in Continental Europe
University of Birmingham	Pharmacy
University of Birmingham	Physics and Astrophysics
University of Birmingham	English
University of Birmingham	Sport, Exercise and Health Sciences
University of Birmingham	History
University of Exeter	Medical Imaging (Diagnostic Radiography)
University of Lincoln	Psychology with Forensic Psychology
University of Lincoln	Ecology and Conservation
University of Liverpool	Psychology
University of Manchester	Law with International Study
University of Nottingham	Veterinary Medicine
University of Sheffield	Robotics with a Foundation Year
University of Warwick	Psychology
University of Warwick	Chemistry
University of Worcester	Biology
University of Worcester	Theatre, Acting & Performance
University of York	Chemistry with a year in industry

A number of alumni have entered into employment and apprenticeships, including the **police force**, **hospitality**, **pharmaceutical**, **engineering** and **finance** companies. We are immensely proud of all of our alumni.

# Getting further information

For further information please visit the Sixth form area on our [website](#) or by scanning the QR code below;



On the website you will find more information and videos about;

- Course overviews
- Sixth form life
- Application information
- Videos on student insight
- CEIAG information
- Entry requirements

## Safeguarding Statement

Woodrush High School is committed to safeguarding and promoting the welfare of children and young people, and expects all staff and volunteers to share this commitment. As a school we have robust safeguarding processes and procedures in place to which all staff are trained and adhere to.

Sometimes we may need to share information and work in partnership with other agencies when there are concerns about a child's welfare. We will ensure that our concerns are discussed with the child and their parents/carers first, if appropriate, unless we have reason to believe that such an action would be contrary to the child's welfare.

### **Our Safeguarding Team are:**

- Mr Monk – Deputy Headteacher – Designated Safeguarding Lead (DSL)
- Mrs Francis, Mrs Cassidy, Mrs Holtom-Brown, Mrs Davies and Mr Barber – Deputy Designated Safeguarding Leads (DDSL)

A copy of our full safeguarding policy can be found on the school website or from the school on request.



W: [www.woodrush.org](http://www.woodrush.org) T: 01564 823777 E: [office@woodrush.org](mailto:office@woodrush.org)

Shawhurst Lane, Hollywood, Birmingham B47 5JW